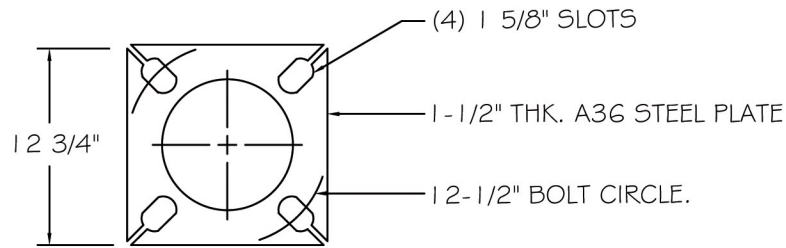




| SPECIFICATION GUIDE   |                               |
|-----------------------|-------------------------------|
| LAMP POST STYLE:      | ALAMEDA 24                    |
| HEIGHTS:              | UP TO 30 FT.                  |
| CASTING MATERIAL:     | A356 CAST ALUMINUM            |
| OPTIONAL MATERIAL:    | A48-83 CL. 30 CAST GRAY IRON  |
| OPTIONAL MATERIAL:    | A395 GR. 60 CAST DUCTILE IRON |
| POLE SHAFT OPTIONS:   | #1 - 2 -5 -6 -7               |
| MATERIAL:             | 1 1/2 GA. ASTM A595 STEEL     |
| FIXTURE STYLE:        | SPECIFIED BY OWNER            |
| ANCHOR BOLTS:         | 1" X 36" A307 HDG             |
| BOLT CIRCLE:          | 10 1/2" TO 12 1/2"            |
| FINISH:               | SPECIFY                       |
| SPECIAL INSTRUCTIONS: |                               |



BASE PLATE

