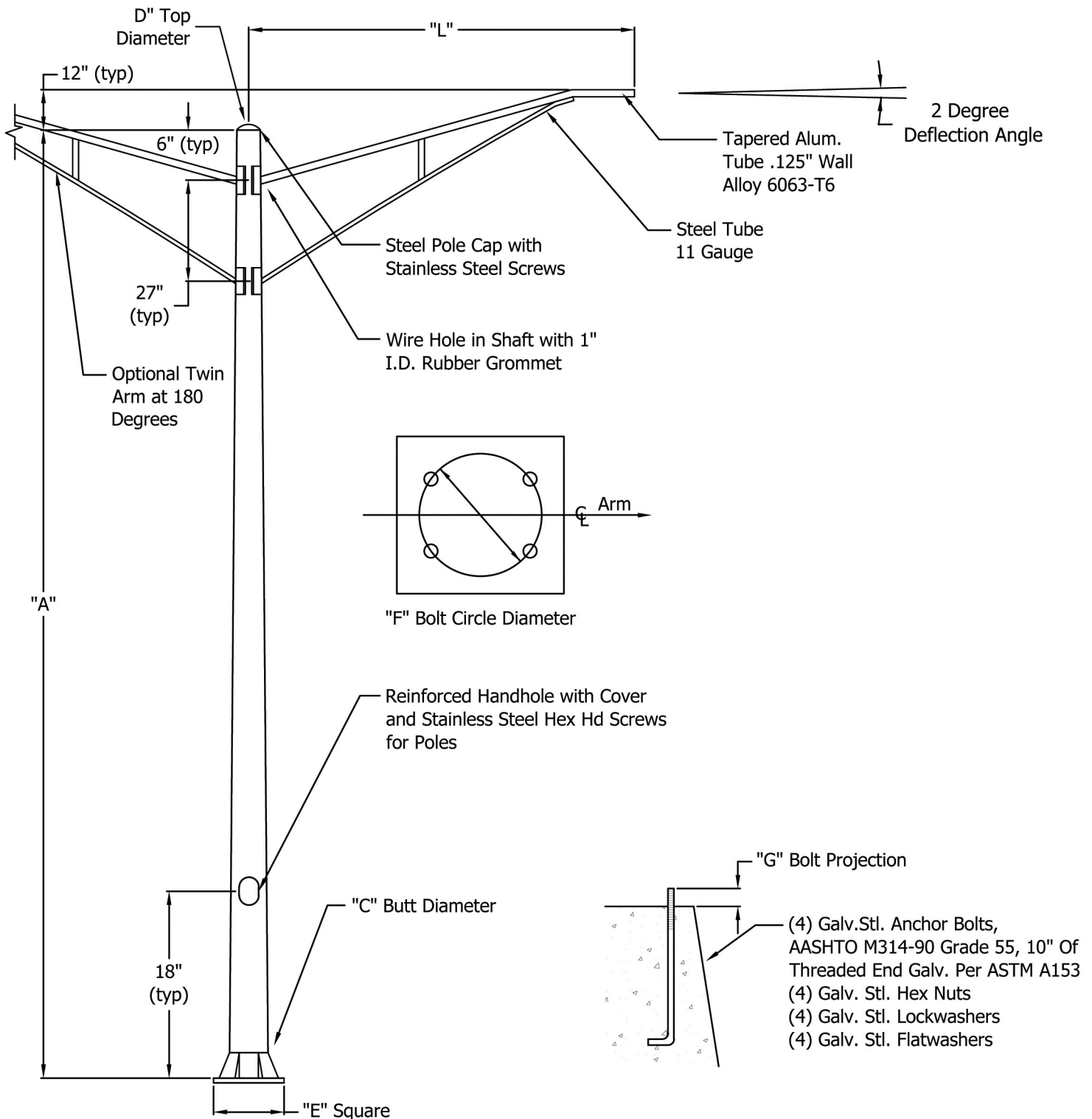


Round Tapered Steel Pole Truss Arms



Single Truss Arm

"A"		"C"	"D"	"E"	"F"	"L"	
Mtg. Height (ft.)	Butt Diameter (in.)	Top Diameter (in.)	Base Square (in.)	Bolt Circle (in.)	Max. Arm Length (ft.)	Catalog Number	
25	6.5	3.7	10.5	9.5	12	RTS-STA-25-65-37-12	
25	7.0	4.2	10.88	10.0	15	RTS-STA-25-70-42-15	
30	7.0	3.5	10.88	10.0	12	RTS-STA-30-70-35-12	
30	7.5	4.0	11.25	10.5	15	RTS-STA-30-75-40-15	
35	8.0	3.8	11.5	11.0	12	RTS-STA-35-80-38-12	
35	8.5	4.3	12.0	11.5	15	RTS-STA-35-85-43-15	

Double Truss Arms

"A"		"C"	"D"	"E"	"F"	"L"	
Mtg. Height (ft.)	Butt Diameter (in.)	Top Diameter (in.)	Base Square (in.)	Bolt Circle (in.)	Max. Arm Length (ft.)	Catalog Number	
25	6.5	3.7	10.5	9.5	12	RTS-DTA-25-65-37-12	
25	7.0	4.2	10.88	10.0	15	RTS-DTA-25-70-42-15	
30	7.0	3.5	10.88	10.0	10	RTS-DTA-30-70-35-10	
30	7.5	4.0	11.25	10.5	12	RTS-DTA-30-75-40-12	
30	8.0	4.5	11.5	11.0	15	RTS-DTA-30-80-45-15	
35	8.0	3.8	11.5	11.0	10	RTS-DTA-35-80-38-10	
35	8.5	4.3	12.0	11.5	12	RTS-DTA-35-85-43-12	
35	8.5	4.3	12.0	11.5	15	RTS-DTA-35-85-43-15	

*For Direct Burial, refer to **Round Tapered Steel Luminaire Arms** Section

POWDER COATED FINISHES:

WP = White
BP = Black
BR = Med Bronze
DG = Dark Green
GP = Gray
NA = Natural Aluminum

SP = Sandstone
BG = Burgundy
HG = Hunter Green
RD = Bright Red
SB = Steel Blue
DB = Dark Bronze

Custom finishes available on request.

Luminaire Arm Span (ft.)	Rise Height (in.)	Arm Size (in.)
10	20	3.8 x 2.4 x 11 Ga.
12	24	4.1 x 2.4 x 11 Ga.
15	30	4.6 x 2.4 x 11 Ga.

NOTES:

1. All poles use 1" x 36" x 4" anchor bolts.
2. All poles are constructed from 11 gauge steel (.1196").
3. All designs assume 4" x 6.5" nominal handhole.
4. Maximum weight of luminaire not to exceed 75 lbs. per arm.
5. Mounting heights are +/- 1' in accordance to arm length and rise height.
6. All designs are based on a 100 mph wind speed with a 30% gust factor and maximum luminaire EPA of 2.0.

Effective Projected Area (EPA) is calculated using the wind velocity (mph) shown in addition to a 30% gust factor. The range of EPAs are calculated assuming a minimum of 25 lbs. to a maximum of 100 lbs. per square foot. Maximum EPA is based on the luminaire weight given. Note that increasing the luminaire weight will decrease the maximum EPA.