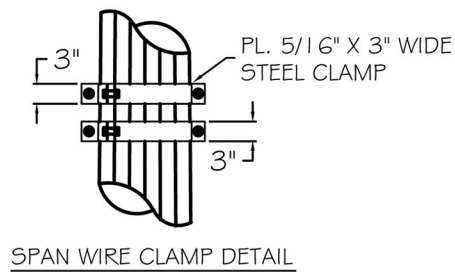
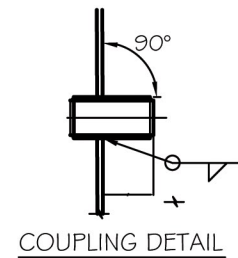
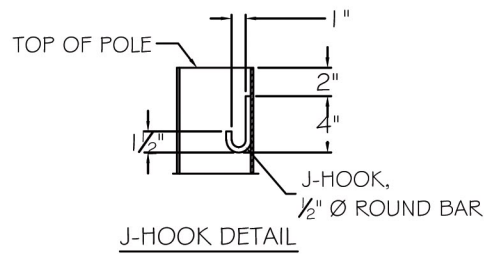


STRAIN POLE SPECIFICATION GUIDE	
POLE TUBES:	ASTM A572 GR 65
BASE PLATE:	ASTM A36
HANDHOLE FRAME:	ASTM A500 GR B
HANDHOLE COVER:	ASTM A36
ANCHOR BOLTS:	ASTM 615, GR. 75
ANCHOR BOLT NUTS:	ASTM A563
MISC. HARDWARE:	ASTMA307 OR AISI 300 SERIES STAINLESS STEEL
WELDING:	AWS D1.1, LATEST EDITION, USING E70 SERIES MATERIAL
STRUCTURE FINISH:	POLES: ASTM A123 ANCHOR BOLTS: ASTM A153 OR SPECIFIED BY OWNER
SPECIAL INSTRUCTIONS:	



ALL COUPLINGS SHALL HAVE
NON-STAINING, RUSTPROOF
THREADED PLUGS INSTALLED
PRIOR TO SHIPMENT.

NOTES:

Designed in accordance with the AASHTO Standard Specifications in structural supports for highway signs, traffic signals, strain poles, distribution, and transmission poles. Engineered per project requirements.