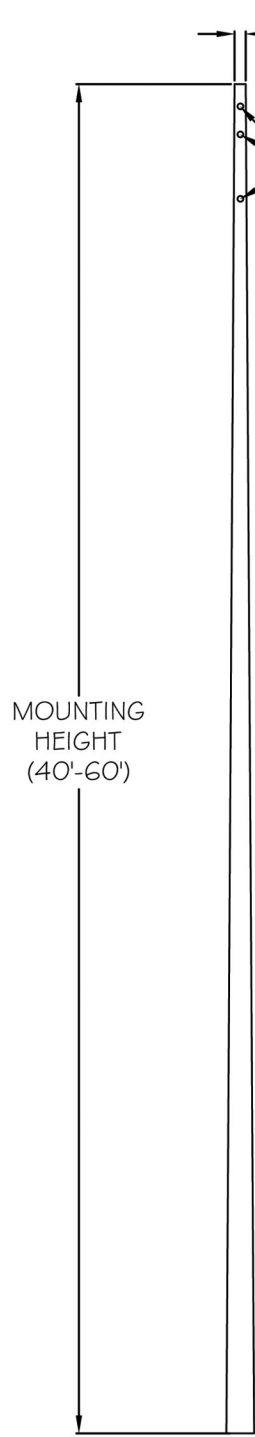
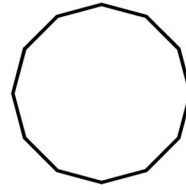


# Steel Distribution Poles Type C4 Series



3.70" TOP  
O.D.

REA & OTHER DRAWING  
PATTERNS AVAILABLE.  
CONSULT UPL FOR DETAILS



12- SIDED  
CROSS SECTION

GALVANIZED: ASTM A123  
ISO 9001 : 2000 CERTIFIED

### TYPE C4 SERIES

POLE SHAPE	TAPER	PLATE THICKNESS	YIELD STRENGTH	TOP DIAMETER	
12 SIDED ROUND	0.14"/FT	0.1875"	65 KSI	3.70"	
CATALOG NUMBER	POLE HEIGHT (FT.)	BOTTOM O.D. (IN.)	SURFACE DIAMETER (.IN)	MOMENT CAP GRND LINE (FT.-KIPS)	POLE WEIGHT (lbs.)
C4-060-117	60	11.72	10.60	75.3	975
C4-055-110	55	11.02	9.97	68.5	860
C4-050-103	50	10.32	9.34	61.6	752
C4-045-100	45	10.00	9.09	54.8	619
C4-040-93	40	9.30	8.46	48.0	521

VARIES  
9.30" O.D.  
to  
11.72" O.D.